

CONCERTO

for

TUBA and ORCHESTRA

(to Chester Schmitz)

SOLO TUBA

JOHN WILLIAMS

Allegro Moderato ♩ = 124

2 Solo *f*

6 *sfz*

9

10

15 *sfz*

14 *mf espr.*

18 *cresc.* *f*

21

24 *cresc.*

27 *sfz*

30 Solo *f*

34 *ff* *molto marc.*

37

© 1988 MARJER MUSIC CORP.

All rights administered by WARNER-TAMERLANE PUBLISHING CORP.

All Rights Reserved

SOLO TUBA

39 *mf*

43 *ff*

47 *ff*

51

53 11 65 3 68 14 82

83 Solo *f*

87

91 92

93 *f*

95 *espr.*

98

101 *ff* 2

SOLO TUBA

107 Solo *f* 108

109 *sfz*

112 *sfz* *sfz*

115 *espr.* *rall.*

120 **Meno Mosso** *mf* *p*

124 *mf* *ff* *p* *f* 5 5 5

128 5 *p* 130 **A Tempo** (b) 5 5 5

131 *rit.* 5 5 5 *p*

134 *marc. e cresc. drammatico* *sfz* **Piu Mosso** *mf* *ff*

137 *sf* *sf* *f* 5

140 **Slowly** *accel.* *rit.*

142

145 *a piacere*

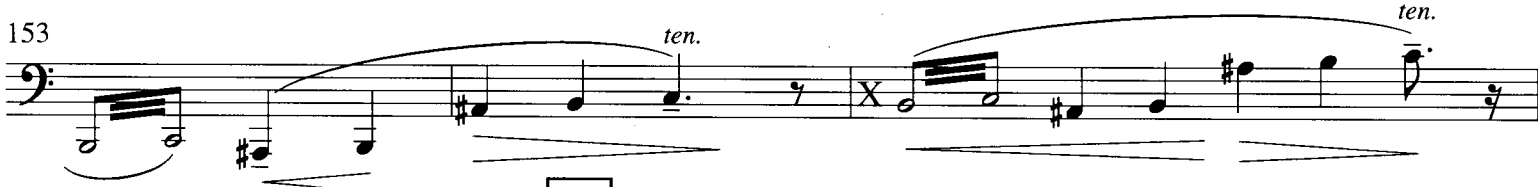
148



151

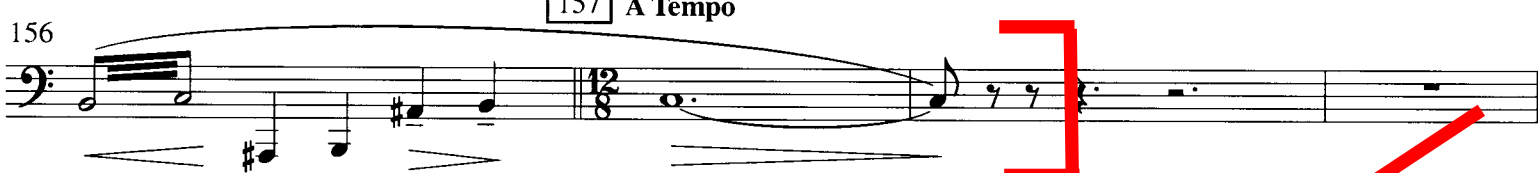


153



157 A Tempo

156



160



163



166

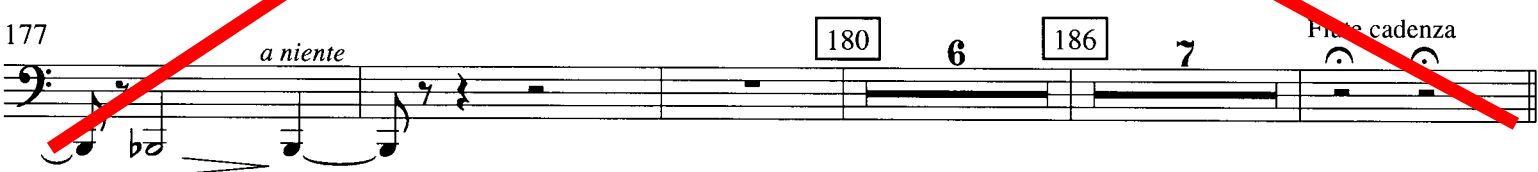
167



171 II. Andante ♩ = 60



177



180

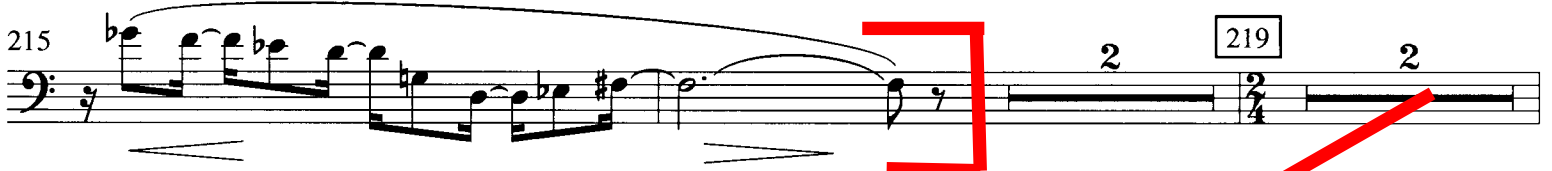
6

186

7

Fine cadenza

SOLO TUBA

104 *Allegro*Sord. if desired
Solo *espr.*

SOLO TUBA

7

236

mf

240 *rall.* *mf espr.* 3

244 3

248

251 *rit.* *rit.*

253 Flute Solo 2

260 10

257 2 *espr.* *f* 6

261 Quasi Cadenza *rit.* 3 3 3 3 *ten.* //

263 266 III. Allegro Molto ♩ = 126 - 132

268 Calmo *pp*

273 A Tempo

278 3

SOLO TUBA

281 *mp*

284 286 *mf*

287

290 292 *f*

293

297 *marc.*

301 303 *cresc.*

305

310 Solo *espr.* *mf* 311

313 319

317

320

SOLO TUBA

323

326

329

333

337

342

344

347

351

354

355

357

360

363 Deciso

367

This musical score for Solo Tuba consists of ten staves of music, each containing measures 323 through 367. The notation is in bass clef with various time signatures (3/4, 2/4, 3/8, 4/4, 5/4, 2/2, 3/2, 4/4, 3/4, 2/4). The music features a variety of rhythmic patterns, including eighth and sixteenth notes, as well as rests and ties. Dynamic markings such as *sfz*, *f*, *mp*, and *sfz* are used throughout. Performance instructions include accents (^), slurs, and a 'Deciso' (decisive) marking at measure 363. Measure numbers are enclosed in boxes at the start of each staff.

SOLO TUBA

372 *f* *mp* 373

376 377

380

383

386

393 *mp* 399

397

400

403

406 407 *f*

410 (7)

414 (7) *p*

SOLO TUBA

418 *cresc.* *ff* *(γ)* 420

424 427

431 *p* *dim.*

437 *sub. mp* *sfz* *ff* *p*

442

445 *sub. mf* *cresc.*

449 **Brillante** *f* 454

452 *ff* 458

456 *Solo* *Solo* 465

460 466 *sfz*

The image shows a page of musical notation for a Solo Tuba part, spanning measures 418 to 466. The notation is written on a single staff in bass clef. A large red 'X' is drawn across the entire page, from the top left to the bottom right. The music includes various dynamics such as *cresc.*, *ff*, *p*, *dim.*, *sub. mp*, *sfz*, *sub. mf*, *f*, and *sfz*. There are also performance markings like *(γ)*, *Brillante*, and *Solo*. The key signature has one sharp (F#). The time signature changes from 3/4 to 5/8 and back to 3/4. Measure numbers are indicated in boxes above the staff.